

BOLETIM DO MUSEU PARAENSE EMÍLIO GOELDI. HUMAN SCIENCES

EDITORIAL POLICY

Focus and Scope

The Boletim do Museu Paraense Emílio Goeldi. Human Sciences aims to publish original works in archaeology, history, anthropology, Indigenous linguistics, and related disciplines, while also promoting diversity in terms of gender equity, ethnic group representation, and geographical inclusivity.

Section Policies

The journal accepts contributions in Portuguese, Spanish, English, and French for the following sections:

Scientific Articles – Original analytical texts resulting from research that provides a significant contribution to the advancement of knowledge. From 15 to 30 pages.

Review Articles – Original analytical or essayistic texts, providing a bibliographic or theoretical review of a specific subject or theme. From 15 to 30 pages.

Research Notes – A shorter preliminary report than a full article, focusing on field observations, research challenges, and progress in ongoing studies, emphasizing hypotheses, sources, partial results, methods, and techniques used. Up to 15 pages.

Memory – A section dedicated to the dissemination of collections or their components that are relevant to scientific research; partially or fully transcribed documents accompanied by an introductory text; and biographical essays, including obituaries or personal memoirs. Up to 20 pages.

Debate – Critical essays on contemporary issues. Up to 15 pages.

Book Reviews – A descriptive and/or critical text on works published in print or electronic format. Up to five pages.

Theses and Dissertations – A brief description, without bibliography, of master's dissertations, doctoral theses, and habilitation works. One page.

Interview – interviews with researchers, thinkers, or cultural agents whose trajectories and reflections contribute meaningfully to the field of the Human Sciences. The interviews should address current or historical topics with critical depth, promoting the exchange of ideas and experiences. Up to 5 pages.

Photo Essay – visual productions that engage with themes, practices, and issues relevant to the Human Sciences. The essays should present a coherent aesthetic and conceptual proposal, accompanied by an introductory text that contextualizes the images and their relevance to academic or sociocultural debate. Up to 15 images, with brief captions and an introductory text (up to 5 pages).

The Boletim do Museu Paraense Emílio Goeldi. Human Sciences publishes summaries of theses and dissertations but does not publish thesis or dissertation chapters. Recognizing the academic necessity and interest in disseminating results from postgraduate research, it is recommended that a distinct scientific article be produced in these cases, emphasizing key findings from the thesis or dissertation while incorporating direct citations where appropriate. This guideline also applies to monographs in general, as well as undergraduate thesis and capstone projects.

The journal does not accept extended abstracts, texts in the form of reports, or works previously published in any publicly accessible medium, except for Preprints, which are manuscripts that have not yet been peer-reviewed by a scientific journal or have already been reviewed but are still in the publication process, provided they are available on reliable preprint servers. The editorial board recommends that authors make their manuscripts available on the SciELO Preprint platform (<https://preprints.scielo.org/index.php/scielo>).

Open Science

The journal operates in accordance with Open Science principles and follows the SciELO Criteria.

Fees

The journal is open access, meaning that all content is freely available at no cost to users or institutions. Additionally, no fees are charged for manuscript submission or publication.

Peer Review Process

The journal has a Scientific Council. Submitted manuscripts are first evaluated by the Scientific Editor or one of the Associate Editors. The Editor reserves the right to suggest modifications to the submitted manuscripts or to return them if they do not meet the publication criteria. Once accepted, the manuscripts undergo peer review. Each article is reviewed by at least two experts who are not part of the Editorial Committee and who provide independent assessments. In cases of disagreement between reviewers, the manuscript is sent to additional expert(s) for further evaluation. If modifications or corrections are recommended, the manuscript is returned to the author(s), who will have 30 days to submit a revised version.

In alignment with the principles of ethnic, gender, and geographical equity, the journal is committed to enhancing the diversity of expert opinions while ensuring the required level of expertise and academic qualifications. After receiving anonymous reviews, the Editor decides whether to accept the article for publication. If accepted, the author(s) are invited to revise the article based on the reviewers' comments and the Editor's observations. The author(s) must explain how the revisions were addressed and justify any suggestions they choose not to incorporate. All revisions must be made using the "Track Changes" tool in Microsoft Word. The revised manuscript must be submitted via the online platform using the revision link available in the "AUTHOR PANEL" on ScholarOne by clicking "CREATE A REVIEW".

Once approved, manuscripts are published in order of submission. However, the Scientific Editor may determine the most appropriate timing for publication.

An author may only submit a new manuscript 12 months after the submission date of their previous contribution.

At the end of the document, a flowchart illustrates the editorial processing stages in the journal.

Author Contributions

At the time of submission, it is necessary to specify the contribution of each author according to the CRediT categories: 1) Project administration; 2) Formal analysis; 3) Funding acquisition; 4) Conceptualization; 5) Data curation; 6) Writing – original draft; 7) Writing – review and editing; 8) Investigation; 9) Methodology; 10) Resources; 11) Software; 12) Supervision; 13) Validation; 14) Visualization. This information is published on the last page of the article.

Preprint Policy

To accelerate scientific communication, the journal recommends depositing submissions in SciELO Preprints (<https://preprints.scielo.org/index.php/scielo>). However, simultaneous submission to another journal is not permitted. Submissions will maintain their originality for

publication, and the evaluation process will not use double anonymization, as the authorship will be made known upon publication in the Preprints category. Contributions will undergo the review process, and if accepted, authors must update their records on the Preprints server and provide the complete reference of the published work.

In the case of Preprint submission, authors must provide the link in a separate file named "Preprint," which should be submitted alongside the main document during the submission process in Step 2: File Upload.

Data Policy

After article approval, authors are encouraged to deposit research data in the journal's interface on the SciELOData repository (<https://data.scielo.org/dataverse/brbgoeldi>). This recommendation applies only to cases that do not present ethical or legal concerns. For information on depositing data in the SciELOData repository, visit https://wp.scielo.org/wp-content/uploads/Guia_deposito_pt.pdf.

Research data refers to scientific records generated during the investigation process, which are essential for validating the results obtained. Examples include research projects, reports submitted to funding agencies, descriptions of collections used, tables, charts, and statistical information not included in the article, as well as recordings or transcripts of oral interviews. All research data mentioned in the manuscript and already made publicly available must be properly referenced and listed in the references section (for details on how to cite these documents, visit https://wp.scielo.org/wp-content/uploads/guia-de-citacao-de-dados_pt.pdf).

Authors are required to sign the Open Science Compliance Form, which must be submitted along with the pre-publication version of the article. In the case of deposition in other repositories, the author must provide the link to the journal at this stage through the declaration. It is recommended to consult the list of research data repositories provided by the SciELO collection, available at https://wp.scielo.org/wp-content/uploads/Lista-de-Repositorios-Recomendados_pt.pdf

Use of Artificial Intelligence Tools

BMPEG. Human Sciences advises authors and reviewers to consult the Guide for the Use of Artificial Intelligence (AI) Tools and Resources (<https://wp.scielo.org/wp-content/uploads/Guia-de-uso-de-ferramentas-e-recursos-de-IA-20230914.pdf>) whenever AI tools or AI-generated content are used in manuscripts, with particular attention to the following principles outlined in the guide:

- Disclose/mention the sources of materials used in the research and in the writing of the article or chapter. Any and all use of, or content generated by, an AI application must be disclosed in the abstract and in the methods section or its equivalent;
- Ensure that all cited material is properly attributed, including full citations, and verify that the sources cited support the claims made by the AI application, as it is not uncommon for such tools to generate references to non-existent works;
- Assume public responsibility for one's work;
- Concealing the use of AI tools or content constitutes an ethical violation that breaches the principles of transparency and honesty in research.

Accessibility Policy

The journal is committed to incorporating visual and auditory resources related to inclusion and accessibility. The author of each submission accepted for publication must provide a video recording with a reading of the article's abstract. This recording will be associated with the published article and made accessible via a link for users who require or wish to use this type of media.

Ethical Recommendations

The journal adheres to the guidelines of the Committee on Publication Ethics (COPE), as well as the use of the "Good Practices Guide for Strengthening Ethics in Scientific Publication" (2018), and follows the recommendations of the International Committee of Medical Journal Editors (ICMJE) to ensure the integrity of the results published by the journal.

Plagiarism is considered an editorial crime and is deemed unacceptable by the journal. To prevent this unethical practice, the BMPEG. Human Sciences journal uses the iThenticate plagiarism detection software by Crossref.

Copyright Statement

All content in the journal is licensed under a Creative Commons Attribution CC-BY license. Under this model, authors retain copyright and grant the journal the right to first publication. After the first publication in the journal, authors may enter into separate additional contracts for non-exclusive distribution of the version of the work as published in this journal in institutional repositories or publish it as a book chapter, with appropriate attribution of authorship and initial publication in this journal. The journal follows the recommendations of the Open Access Movement, making all its content available online and free of charge.

Research Involving Human Beings

Research involving human beings must comply with Resolution CNS No. 466/2012 <https://conselho.saude.gov.br/resolucoes/2012/Reso466.pdf>. For submissions resulting from research with human groups, it is the responsibility of the author(s) to submit the informed consent form at the time of manuscript submission, along with the document related to the study's registration with the Ethics Committee for Human Research. Authors are also advised to mention in the manuscript the approval of the research by an Ethics Committee recognized by the National Commission of Ethics in Research, under the National Health Council (CONEP-CNS).

Indexers

Anthropological Index Online; Anthropological Literature;
Directory of Open Access Journals (DOAJ);
Citas Latinoamericanas em Ciencias Sociales y Humanidades (CLASE); Latindex;
Redalyc;
Scientific Electronic Library Online (SciELO); SCOPUS ELSEVIER.

Article Submission

The Boletim do Museu Paraense Emílio Goeldi. Human Sciences accepts contributions only in digital format. The digital files of articles must be submitted online through the ScholarOne platform via the journal's website <http://editora.museu-goeldi.br/humanas> or directly through the link <https://mc04.manuscriptcentral.com/bgoeldi-scielo>, providing the required information requested by the platform. Before submitting their work, authors must ensure that the journal's guidelines have been followed. Compliance with these guidelines is essential for the initiation of the editorial process.

The Boletim do Museu Paraense Emílio Goeldi. Human Sciences does not accept simultaneous submissions by the same author or co-author. A 12-month waiting period must be observed before submitting a new contribution.

Registration

The author(s) must create an account (Login/Password) on the online platform by accessing the "CREATE AN ACCOUNT" section and filling in their profile correctly. Registration/creating an account should be done only once. Afterward, the account should be used for all work submissions, reviews, and evaluations.

When submitting the article, all authors must register with the international academic identification platform Connecting Research and Researchers (ORCID). Registration is required for both authors and co-authors. The journal assigns a Digital Object Identifier (DOI) to all published works and adopts continuous publication of articles approved by the journal.

Submission Process

To submit a new manuscript, the author must log in to the online platform and click on "AUTHOR". After this step, the author should navigate to the "AUTHOR PANEL" window and begin the submission process by clicking on the "START NEW SUBMISSION" link. The author will then be required to complete seven steps in the submission process:

- Step 1: Type, Title, and Abstract
 - Choose the type of work (article, review, etc.).
 - Enter the title of the work.
 - Provide the abstract.
- Step 2: File Upload
 - Upload the file (s).
 - (At least one of the files must represent the main document).
- Step 3: Attributes
 - Add keywords (3 to 6).
- Step 4: Authors and Institutions
 - Specify whether the submitter is the author or a third party.
 - Specify the corresponding author.
 - Provide the CRediT contribution.
- Step 5: Reviewers
 - Specify preferred reviewers and/or those you would like to avoid. It is at the discretion of the journal to accept or reject the recommended reviewers.
- Step 6: Details and Comments
 - Specify the funding sources for the research.
 - Declare that the work has been submitted exclusively to the Boletim and has not been previously published.
 - Declare that the work complies with the ethical standards of the discipline.
 - Affirm that the submitted files are completely anonymous to allow for peer review, in case the author opts not to deposit the article in a reliable preprint repository.
 - Declare any potential conflicts of interest. If there are any, specify them.
- Step 7: Evaluate and Submit
 - Verify that all information and files are complete, view the PDF proof, and finalize the submission by clicking "SUBMIT".

Once the works are formatted, they are sent by email in PDF format for final approval by the authors, who must respond as promptly as possible. At this step, no modifications to the content or changes affecting the pagination are allowed. If the author does not respond within the given timeframe, the formatted version is considered approved.

Guidelines for Authors

All submissions must be sent through the online submission platform ScholarOne.

The original manuscripts should be submitted:

1. The manuscript should be submitted in Word, using Times New Roman, size 12, with 1.5 line spacing, and pages must be consecutively numbered. For Indigenous linguistics papers, a font compatible with the Unicode standard, such as Arial, Calibri, Cambria, DéjàVu, Tahoma, or others that include all the phonetic symbols of the International Phonetic Alphabet (IPA), must be used. Times New Roman is preferred, but it includes IPA in Unicode only from the latest Windows versions. Never improvise IPA symbols by using regular letters with strikethroughs (imitating ~~i~~, ~~u~~, etc.).
2. The first page must include:
 - a. Title (in the language of the text and in English);
 - b. Abstract;
 - c. Abstract (in English);
 - d. Keywords.
3. The original manuscripts must not include the name(s) of the author(s) or acknowledgments.
4. Terms or expressions should be highlighted using single quotation marks.
5. Only Latinized scientific terms and words in foreign languages should be italicized.
6. Articles must follow the guidelines of the APA 7th Edition - Citation Guide (free access at <https://apastyle.apa.org/blog/coronavirus-response>) for the use and presentation of citations and references.
7. Tables must be typed in Word, sequentially numbered, with clear captions.
8. All figures (illustrations, graphs, images, diagrams, etc.) must be submitted separately through the online platform, with their respective captions, numbered sequentially. They should have a minimum resolution of 300 DPI and a minimum size of 1,500 pixels, in JPEG or TIFF format, following, if possible, the proportions of the Boletim page format, with limits of 16.5 cm in width and 20 cm in height (for use in two columns) or 8 cm in width and 20 cm in height (for use in one column). Text in figures, if present, should be in Arial font, with a size between 7 and 10 pts.
9. Figures created in vector programs may be submitted, preferably in open format, with extensions .cdr (X5 or earlier), .eps, or .ai (CS5 or earlier).
10. The article text must refer to all tables, graphs, and illustrations.
11. Sections and subsections in the text should not be numbered.
12. Only page numbering and footnotes should be automated. Texts containing automated numbering of sections, paragraphs, figures, examples, or other automated processes such as referencing and compiling the reference list will not be accepted.
13. Carefully observe scientific nomenclature rules, as well as abbreviations and conventions adopted in specialized disciplines.
14. Footnotes should be numbered in Arabic numerals and used only when absolutely necessary, never as references.
15. Citations and references to authors within the text should follow this format: author's surname (not in uppercase), year, page(s). Examples: (Goeldi, 1897, p.10); Goeldi (1897, p.10).
16. All works cited throughout the text must be correctly referenced at the end of the article, and all references at the end of the article must be cited in the text.

Basic Structure of the Manuscripts

1. **Title** – In the language of the text and in English (when the language of the text is not English). The title should be written in lowercase, in bold, and centered on the page.
2. **Abstract** – The text should be in a single paragraph, using the active voice and third-person singular, highlighting the objectives, method, results, and conclusions of the work, with a minimum of 100 words and a maximum of 200, in the language of the text (Resumo) and in English (Abstract). The English version must be done or corrected by a native speaker (preferably a colleague in the field), which is the responsibility of the author(s).
3. **Keywords** – Three to six words that identify key concepts of the work, for indexing purposes in databases.
4. **Text** – The text should be composed of unnumbered sections and, whenever possible, include an introduction, theoretical framework, development, conclusion, and references. Avoid long paragraphs and sentences. Prefer the passive voice, avoiding the use of the first person singular and plural throughout the text. Acronyms should initially be written in full. Example: “The Federal University of Pará (UFPA) is preparing a new entrance exam.” Citations with fewer than 40 words should be within the paragraph and enclosed in double quotation marks (“ ”); citations of 40 words or more should be formatted as a block, with a 1.3 cm left margin indent, in a smaller font, as shown in the example below:

Indeed, housing in cities is essentially unnatural, associated with manifestations of the spirit and will, as it opposes nature. For many conquering nations, the construction of cities was the most decisive instrument of domination they knew. Max Weber admirably shows how the foundation of cities represented, for the Near East and particularly for the Hellenistic world and imperial Rome, the specific means of creating local organs of power; adding that the same phenomenon can be found in China, where, even during the last century, the subjugation of the Miao tribes can be linked to the urbanization of their lands (Buarque de Holanda, 1978, p.61).

5. **Acknowledgments** – Should be concise: credits for funding, affiliation with graduate programs and/or research projects, personal and institutional acknowledgments. Names of individuals and institutions should be written in full, explaining the reason for the acknowledgment. Please note that the first version submitted is for anonymous evaluation and should not include acknowledgments.
6. **References** – Should be listed at the end of the work, in alphabetical order, according to the surname of the first author. In the case of multiple references by the same author, use chronological order, from the oldest to the most recent work. All references must follow the guidelines of the APA 7th Edition - Citation Guide.

Bibliographic Standards and Guidelines

The correct use of the guidelines for reference formatting and the proper application of the new spelling rules of the Portuguese language in articles and other documents submitted to the journal are the responsibility of the authors. The following list provides several examples of references in their different categories:

Book

Veríssimo, J. (1906). *A educação nacional* (2 ed.). Livraria Francisco Alves.

In-text citation: Veríssimo (1906) ou (Veríssimo, 1906)

Vidal, W. N., & Vidal, M. R. R. (1986). *Botânica-organografia: quadros sinóticos ilustrados de fanerógamos* (3ed.). UFV.

In-text citation: Vidal e Vidal (1986) ou (Vidal & Vidal, 1986)

Wieczorek, A., Rosendahl, W., & Schlothauer, A. (Orgs.). (2012). *Der Kult um Kopf und Schädel*. Verlag Regionalkultur.

In-text citation: Wieczorek et al. (2012) ou (Wieczorek et al., 2012)

Book Chapter

Grünewald, R. A. (2004). Etnogênese e 'regime de índio' na Serra do Umã. In J. P. Oliveira (Org.), *A viagem da volta: Etnicidade, política e reelaboração cultural no Nordeste indígena* (pp. 139-174). Contra Capa Livraria.

In-text citation: Grünewald (2017) ou (Grünewald, 2017)

Carneiro da Cunha, M. (1992). Política indigenista no século XIX. In M. Carneiro da Cunha (Org.), *História dos índios no Brasil* (pp. 133-154). Companhia das Letras.

In-text citation: Carneiro da Cunha (1992) ou (Carneiro da Cunha, 1992)

Series/Collection

Goeldi, E. (1900). *Escavações arqueológicas em 1895: executadas pelo Museu Paraense no litoral da Guiana Brasileira entre Oiapoque e Amazonas* (Memórias do Museu Goeldi, n.1). Museu Paraense de História Natural e Ethonografia.

In-text citation: Goeldi (1900) ou (Goeldi, 1900)

Journal Article

Gurgel, C. (1997). Reforma do Estado e segurança pública. *Política e Administração*, 3(2), 15-21.

In-text citation: Gurgel (1997) ou (Gurgel, 1997)

Jantz, R. L., & Owsley, D. W. (2001). Variation among early North America crania. *American Journal of Physical Anthropology*, 114(2), 146-155. [https://doi.org/10.1002/1096-8644\(200102\)114:2<146::AID-AJPA1014>3.0.CO;2-E](https://doi.org/10.1002/1096-8644(200102)114:2<146::AID-AJPA1014>3.0.CO;2-E)

In-text citation: Jantz e Owsley (2001) ou (Jantz & Owsley, 2001)

Posth, C., Nakatsuka, N., Lazaridis, I., Skoglund, P., Mallick, S., Lamnidis, T. C., . . . Reich, D. (2018). Reconstructing the deep population history of Central and South America. *Cell*, 175(5), 1-13. <https://doi.org/10.1016/j.cell.2018.10.027>

In-text citation: Posth et al. (2018) ou (Posth et al., 2018)

Velthem, L. H. V. (2012). O objeto etnográfico é irreduzível? Pistas sobre novos sentidos e análises. *Boletim do Museu Paraense Emílio Goeldi. Ciências Humanas*, 7(1), 51-66. <http://dx.doi.org/10.1590/S1981-81222012000100005>

In-text citation: Velthem (2012) ou (Velthem, 2012)

Tersis, N., & Carter-Thomas, S. (2005). Investigating syntax and pragmatics: word order and transitivity in Tunumiisut. *International Journal of American Linguistics* 71(4), 473-500.

In-text citation: Tersis e Carter-Thomas (2005) ou (Tersis & Carter-Thomas, 2005)

Newspaper Article

Naves, P. (1999, junho 28). Lagos andinos dão banho de beleza. *Folha de S. Paulo*, Turismo, Caderno 8, p. 13.

In-text citation: Naves (1999) ou (Naves, 1999)

Newspaper Article in Electronic Format

Justiça suspende obra de captação de água para a Grande São Paulo. (2017, maio 5). *Folha de São Paulo*. <https://www1.folha.uol.com.br/cotidiano/2017/05/1881436-justica-suspende-duas-obras-de-captacao-de-agua-para-grande-sp.shtml>

In-text citation: "Justiça suspende" (2017) ou ("Justiça suspende" 2017)

Silva, I. G. (1998, setembro 19). Pena de morte para o nascituro. *O Estado de S. Paulo*. <http://www.portaldafamilia.org/artigos/artigo225.shtml>

In-text citation: Silva (1998) ou (Silva, 1998)

Paper Presented at a Conference

Brayner, A. R. A., & Medeiros, C. (1994, dezembro). Incorporação do tempo em SGBD orientado ao bjetos. In *Anais do Simpósio Brasileiro de Banco de Dados*, Universidade de São Paulo, São Paulo.

In-text citation: Brayner e Medeiros (1994) ou (Brayner & Medeiros, 1994)

Paper Presented at a Conference in Electronic Format

Silva, R. N., & Oliveira, O. (janeiro, 1996). Os limites pedagógicos do paradigma da qualidade total na educação. In *Anais Eletrônicos do Congresso de Iniciação Científica da UFPe*, Universidade Federal de Pernambuco, Recife. <https://www.ufpe.br/propesq/anais/educ/ce04.htm>

In-text citation: Silva e Oliveira (1996) ou (Silva & Oliveira, 1996)

Internet Messages: Electronic Discussion List and Other Online Communities

Boletim do Museu Paraense Emílio Goeldi. Ciências Humanas. (2018, julho 16). Boletim de Ciências Humanas do Museu Paraense Emílio Goeldi discute patrimônio indígena [Facebook]. <https://www.facebook.com/boletimgoeldiCH/>

In-text citation: Boletim do Museu Paraense Emílio Goeldi. Ciências Humanas (2018) ou (Boletim do Museu Paraense Emílio Goeldi. Ciências Humanas, 2018)

Blog SciElo em Perspectiva Humanas. (2018, junho 13). Cultura ancestral para entender a Amazônia de ontem e de hoje [Blog]. <http://humanas.blog.scielo.org/blog/2018/06/13/cultura-ancestral-para-entender-a-amazonia-de-ontem-e-de-hoje/>

In-text citation: Blog SciElo em Perspectiva Humanas (2018) ou (Blog SciElo em Perspectiva Humanas, 2018)

Legal Document

Constituição da República Federativa do Brasil de 1988 (18 ed.). (1998). São Paulo: Saraiva.

In-text citation: Constituição da República Federativa do Brasil de 1988 (1998) ou (Constituição da República Federativa do Brasil de 1988,1998)

Decreto n. 3.298. (1999, dezembro 20). Regulamenta a política nacional para a integração da pessoa portadora de deficiência, consolida as normas de proteção e dá outras providências. Brasília, DF: Presidência da República.

In-text citation: Decreto n. 3.298 (1999)

Legal Document in Electronic Format

Resolução n.17, de junho de 1991. Coleção de Leis da República Federativa do Brasil. <http://www2.camara.leg.br/legin/fed/ressen/1991/resolucao-17-14-junho-1991-480998-publicacaooriginal-1-pl.html>

In-text citation: Resolução n. 17, de junho de 1991

Medida Provisória n. 1.569-9, de 11 de dezembro de 1997. Estabelece multa em operações de importação, e dá outras providências. <http://www2.camara.leg.br/legin/fed/medpro/1997/medidaprovisoria-1569-9-11-dezembro-1997-377059-publicacaooriginal-1-pe.html>

In-text citation: Medida Provisória n. 1.569-9, de 11 de dezembro de 1997

Academic Works (Theses, Dissertations, and Monographs)

Benchimol, A. (2015). *Resgate e ressignificação da pesquisa no Museu Paraense Emílio Goeldi: presença e permanência de cientistas estrangeiros (1894-1914) na produção científica de autores atuais (1991-2010)* [Tese de doutorado, Universidade Federal do Rio de Janeiro].

In-text citation: Benchimol (2015) ou (Benchimol, 2015)

Moore, D. (1984). *Syntax of the language of the Gavião Indians of Rondônia, Brazil* [Tese de doutorado, University of New York]. In-text citation: Moore (1984) ou (Moore,1984)

Archive Document

Campos, E. (1964, janeiro 11). *Carta à Bienal de São Paulo.* Arquivo Histórico Wanda Svevo. Fundação Bienal de São Paulo, São Paulo.

In-text citation: Campos (1964) ou (Campos,1964)

Salles, V. (1974, março 28). *Carta a Lúcio Flávio Pinto.* Material histórico-cultural - Vicente Salles. Correspondência expedida - Comunicação. Coleção Vicente Salles. Biblioteca do Museu da Universidade Federal do Pará, Belém.

In-text citation: Salles (1974) ou (Salles, 1974)

Audiovisual Materials

Herzog, W. (Produtor & Diretor). (1970). *Os anões também começaram pequenos* [Filme]. Werner Herzog Filmproduktion. In-text citation: Herzog (1970) ou (Herzog,1970)

Dissemination

The articles are fully published in PDF format on the journal's website, on the Digital Publishing Platform (ISSUU), DOAJ, and SciELO, as well as on social media platforms such as Facebook.

Correspondence Address:

Museu Paraense Emílio Goeldi

Editor of Boletim do Museu Paraense Emílio Goeldi. Ciências Humanas

Av. Perimetral, 1901 - Terra Firme CEP 66077-830

Belém - PA - Brasil Telefone: 55-91-3075-6186

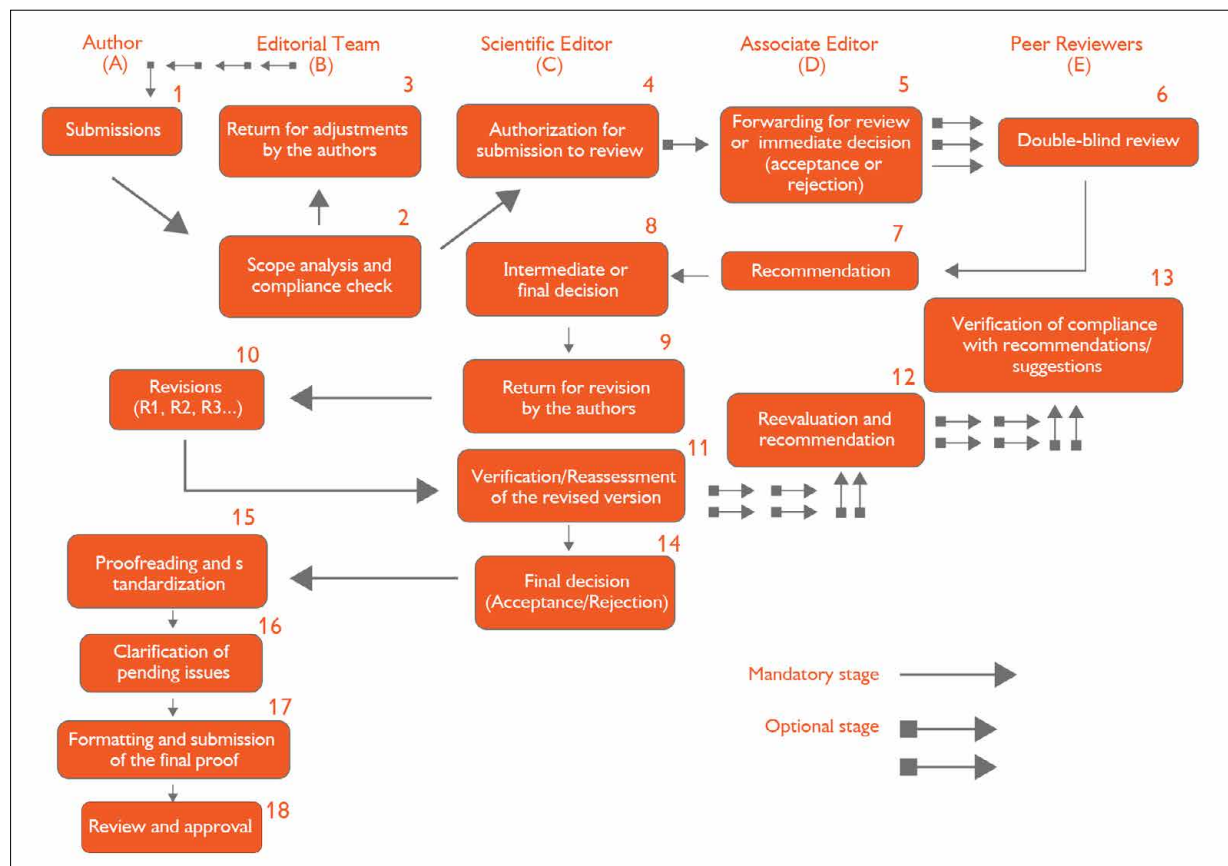
E-mail: boletim.humanas@museu-goeldi.br

Journal Sponsorship

Museu Paraense Emílio Goeldi

Ministry of Science, Technology, and Innovations.

Flowchart of the Editorial Process in BMPEG. Human Sciences



Source: Beltrão e Silva (2020, p. 13)¹.

¹ BELTRÃO, Jímene Felipe; SILVA, Táise da Cruz. Editorial Process Guide in Scientific Journals: The Experience of the Boletim do Museu Paraense Emílio Goeldi. Human Sciences in the Use of the ScholarOne Platform. Belém, 2020. 25p. Available at: <http://editora.museu-goeldi.br/humanas/>. Accessed on: June 11, 2021.